



**Community
Connectors**

Bridport

*Supporting people to
protect and improve
their local rivers and
environment*

Inside:

A handy map with
fun things to do and see

Fun Bridport facts

*Information on how
you can save water
and protect the
environment*



Wessex Water
YTL GROUP

FOR YOU. FOR LIFE.



Hello, Have you ever wondered about how you're connected to the water that is all around you? It's really important that we look after what we have. Read on to discover how water is collected and used in our town, and how you can do your bit to save water and help the environment.



**About
Bridport**

When the railway was built, **West Bay** got its name. Before then it was called Bridport Harbour.



Do you know why Bridport's main street is so wide?

In the past, hemp and flax were grown around Bridport to be made into rope. The rope was laid out to dry in the main street. Much of the rope was used in sailing ships' rigging.

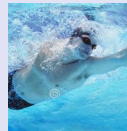
There is a business in Bridport which has been open since 1515. **Balson's** butchers is the oldest family run business in Britain, started when Henry VIII was king.

Population around **14,700** people. This is 0.02% of the UK population!

14% of Bridport's population is under 15 years old - so young people have a big say here!



Bridport Leisure Centre pool is 25m long, 13m wide and approx. 1.5m deep, containing **487,500** litres of water!



**The
Water
Safety
Code**



Stop and think - spot the dangers



Stay together



Call **999** or **112**



In an emergency - **float**

**Water -
a precious resource**

Water is precious, so it's important not to waste it. You can do your bit by making sure you only use what you need. Here are our **TOP TIPS FOR SAVING WATER**:

- Turn the tap off** when you brush your teeth.
- Use a shower timer** to spend a minute less in shower.
- Refill a water bottle** from the tap instead of buying water.
- Save rainwater** to water your garden or houseplants, or try growing your own herbs in small pots.
- Only use** the washing machine or dishwasher with a full load.

**STOP
THE BLOCK**

in your bathroom

To keep your home blockage free, only flush **the three Ps**:

- Paper**
- Pee**
- Poo**

We are working with local groups in Bridport through the Community Connectors project, including **Dorset Wildlife Trust, Bridport Town council, West Bay Discovery Centre and Asker Nature Reserve.**



The Wessex Water Community Connectors project aims to change the way we work with communities in our region. It is important we improve the environment and support local people.

Find out more at wessexwater.co.uk/visit-and-learn/community-connectors

↓ *For your grown ups*

Talk to us if you need help to pay your bills

Don't worry if you're struggling to pay, talk to us today. We offer:

- Payment breaks
- Flexible payment plan
- Water Direct - using benefits payments
- Discount for low-income pensioners
- WaterSure - Bill cap scheme
- Assist - Reduced bill
- Restart - Debt support scheme

Visit [wessexwater.co.uk/help-to-pay](https://www.wessexwater.co.uk/help-to-pay) or call us on 0345 600 3 600.

Extra support when you need it

If you or anyone you know needs extra support, we can help through **Priority Services**:

- help if your supply gets interrupted
- help finding and reading your meter
- bills and leaflets in braille, large print or other languages
- a password to protect against scam house calls.

It's free and easy to register today at [wessexwater.co.uk/priority-services](https://www.wessexwater.co.uk/priority-services) or call 0345 600 3 600.



Take a look at our **free-to-use** tool to help you save money on your water bills, claim free water saving devices for your home and raise money for local charities.

Try it out at [wessexwater.co.uk/getwaterfit](https://www.wessexwater.co.uk/getwaterfit)





Did you know?

There are lots of things to learn and places to see in Bridport

Key

- Rivers and streams
- Parks and woods
- Leisure centre
- Asker nature trail
- Roads
- Bridport Green Route
- Alternative section to avoid steep hill
- Bridport Green Spaces
- Secondary school
- Primary school

Rivers around Bridport

Land around Bridport is very hilly, meaning that rainwater runs quickly off the ground into the local rivers.

The River Brit is approximately 14 kilometres long and starts in the hills north of Beaminster. It flows south to Bradpole and Bridport where it is joined by the River Simene and the River Asker.



Did you know?
The whole of the area shown here falls within the Dorset Area of Outstanding Natural Beauty

Did you know?
The community bus, the play parks, the market, and many local events are all looked after by Bridport Town Council.

Citizen scientists
Wessex Water Guardian volunteers work with Dorset Wildlife Trust and The Environment Agency to look after the river.












Fish pass
The Brit is also home to young salmon and sea trout, which live in the river for two to five years before returning to the sea by special routes that make it easier for fish to travel along the river. You can see a fish pass on the River Brit at Skilling Hill Road.

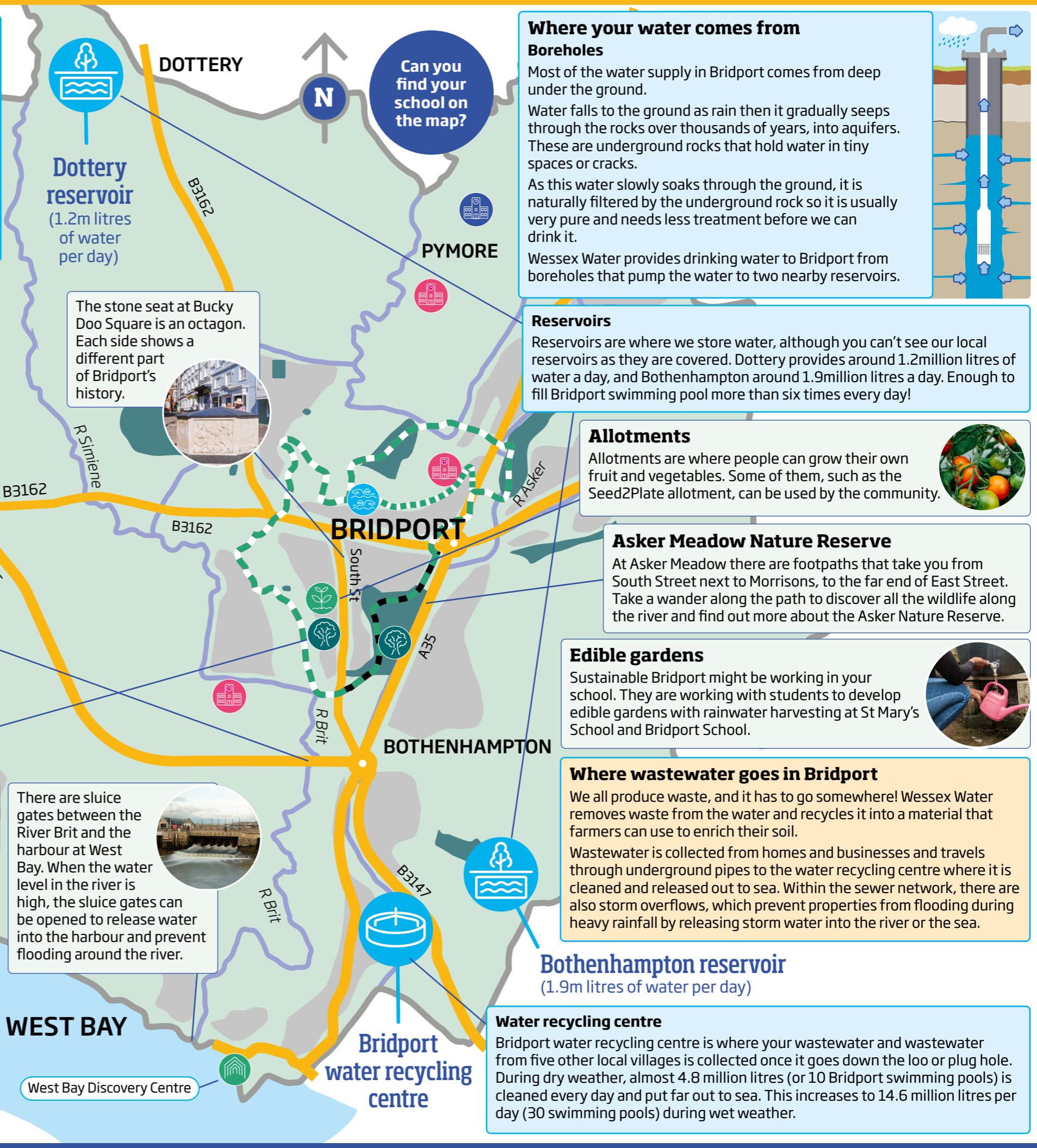


Bridport Green Route
This is a new walk around Bridport. See how many of the animals or fish shown below, you can spot on the walk.

Rivers provide a habitat and home for a wide variety of wildlife including native mammals, fish, birds, and insects. The Brit is home to fish species including stone loach, brown trout and minnows. These support wildlife such as kingfishers and otters.

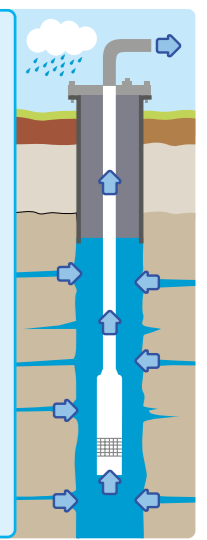
Tick the box when you see any of these

				
<input type="checkbox"/>	<input type="checkbox"/>	<input type="checkbox"/>	<input type="checkbox"/>	<input type="checkbox"/>
				
<input type="checkbox"/>	<input type="checkbox"/>	<input type="checkbox"/>	<input type="checkbox"/>	<input type="checkbox"/>
				
<input type="checkbox"/>				



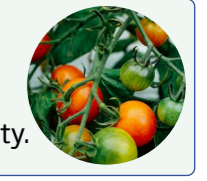
Where your water comes from

Boreholes
Most of the water supply in Bridport comes from deep under the ground. Water falls to the ground as rain then it gradually seeps through the rocks over thousands of years, into aquifers. These are underground rocks that hold water in tiny spaces or cracks. As this water slowly soaks through the ground, it is naturally filtered by the underground rock so it is usually very pure and needs less treatment before we can drink it. Wessex Water provides drinking water to Bridport from boreholes that pump the water to two nearby reservoirs.



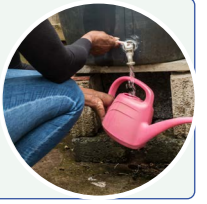
Reservoirs
Reservoirs are where we store water, although you can't see our local reservoirs as they are covered. Dottery provides around 1.2million litres of water a day, and Bothenhampton around 1.9million litres a day. Enough to fill Bridport swimming pool more than six times every day!

Allotments
Allotments are where people can grow their own fruit and vegetables. Some of them, such as the Seed2Plate allotment, can be used by the community.



Asker Meadow Nature Reserve
At Asker Meadow there are footpaths that take you from South Street next to Morrisons, to the far end of East Street. Take a wander along the path to discover all the wildlife along the river and find out more about the Asker Nature Reserve.

Edible gardens
Sustainable Bridport might be working in your school. They are working with students to develop edible gardens with rainwater harvesting at St Mary's School and Bridport School.



Where wastewater goes in Bridport
We all produce waste, and it has to go somewhere! Wessex Water removes waste from the water and recycles it into a material that farmers can use to enrich their soil. Wastewater is collected from homes and businesses and travels through underground pipes to the water recycling centre where it is cleaned and released out to sea. Within the sewer network, there are also storm overflows, which prevent properties from flooding during heavy rainfall by releasing storm water into the river or the sea.

Bothenhampton reservoir
(1.9m litres of water per day)

Water recycling centre
Bridport water recycling centre is where your wastewater and wastewater from five other local villages is collected once it goes down the loo or plug hole. During dry weather, almost 4.8 million litres (or 10 Bridport swimming pools) is cleaned every day and put far out to sea. This increases to 14.6 million litres per day (30 swimming pools) during wet weather.

There are sluice gates between the River Brit and the harbour at West Bay. When the water level in the river is high, the sluice gates can be opened to release water into the harbour and prevent flooding around the river.



Can you find your school on the map?

Dottery reservoir
(1.2m litres of water per day)

The stone seat at Bucky Doo Square is an octagon. Each side shows a different part of Bridport's history.



WEST BAY

West Bay Discovery Centre

Bridport water recycling centre