

Poole Harbour Delivery Group Meeting
16th July 2020 10.00 – 12.30, via MS Teams

Attendees

Fiona Bowles	Chair	Y
Natalie Poulter	Catchment Partnership Co-ordinator	Y
Emma Sumner	PHCI, Catchment Partnership Technician	Y
Ian Rees	Dorset AONB, Countryside Officer	Y
Ali Quinney	Natural Environment Team, Dorset Council	Apologies
Matilda Manley	Litter Free Coast and Sea Co-ordinator, Dorset Coast Forum	Apologies
Oliver Rendle	Dorset Council	N
Chris Osborne/ Dan Williams	Flood Risk Management Team, Dorset Council	Apologies
Jez Martin	Biodiversity Projects Officer, BCP Council	Y
Andrew Pollard (for Amanda Broom)	River Catchments Manager, DWT	Y
Angus Menzies	Riverfly Coordinator, Dorset Wildlife Trust	N
Dave Jones	Regulatory Scientist, Wessex Water	Y
Doug Kite	Conservation Advisor and water specialist, Natural England	Y
Louise Stratton	Dorset County Advisor, NFU	N
Paul Cottington	Environment Advisor, SW National Farmers Union	Y
Nicola Hopkins/ Tim Bowden	Farm Conservation Advisor, FWAG South West,	Y
Charlotte Woodford	Catchment Sensitive Farming Advisor	N
Wakely Cox	Farmer member of the Agriculture Group	Y
Stephen Gregory	Salmonid Research Team, Game & Wildlife Conservation Trust	Y
Scott West	Fisheries Scientist, Westcountry Rivers Trust	N
Dominic Stubbing	Chairman, Frome, Piddle & West Dorset Fisheries Association	N
David Brown/ Gen Crisford	National Trust - Purbeck	Apologies
Keith Calder	Catchment Co-ordinator for Dorset and Hampshire Avon, Environment Agency	Y
Cally Barnes	Bournemouth, Christchurch, Poole Council	Y
Aly Maxwell	NFM Co-ordinator, Environment Agency	Y
Correspondence members		
Renny Henderson	RSPB	N
Alan Frampton	FCERM team, BCP Council	Apologies
Andrew Probets	Dorset Council	Y
Jane Wright	Natural England	Apologies
Ben Davis	LUSH	N
Will Beaumont	GWCT	Apologies

John Humphreys	Chair, Southern IFCA	N
----------------	----------------------	---

Guests: Larry Austin (BCP), James Lowther (CEFAS), Vicky Farwig (WxW), Caroline Fair (BCP)

1. Actions from last meeting

Who	Action	Progress
AM	Feedback to the partnership with an update on WFD data from EA	Complete
All	Comments to NP on draft C&C response by 20th April for inclusion.	Complete
All	Please keep NP and ES informed as working patterns & practices change.	Ongoing
ES	Circulate Beaver note with the minutes from meeting. https://www.wessexwater.co.uk/-/media/files/wessexwater/environment/catchments/poole/key-documents/beaver-file-note.pdf	Complete
ES & NP	Distribute further information after 24th April on PHNMS including Workstream document	Complete
NP	Invite Giles Bryan to delivery group to give update on Wessex Diffuse Pollution Programme	Complete- update to follow
FB & TB	Discuss how to apply PLANET to equestrian holdings	Complete
PC	Ask PHNMS farmer group (Wakely Cox) for interest on data from diffuse pollution and the use of PLANET	Complete
NP	Share the existing catchment pages for Stour and Poole Harbour with partners ahead of RBMP inclusion deadline end of June (new deadline)	Complete
ES & NP	Circulate CaBA reporting form (catchment partnership 'Data collator') to all partners, deadline 15th May for project submissions to NP (new deadline 31st July)	Complete
SW	Send update on Frome, Piddle and West Dorset Fisheries Association and to ask about any projects for the CaBA reporting	Complete
KC	Feedback to partnership on EA requirements for catchment pages update	Complete
KC	Feedback on EA's stand on priorities/issues for the catchment plan update	Complete
NP	Circulate draft themes of catchment plan update for partners to feedback.	Complete
All	Contact Keith to introduce your organisation and key projects: keith.calder@environment-agency.gov.uk .	Complete
All	Respond to the catchment partnership if you want a catchment response to ELMS consultation.	Consultation paused by Defra- Deadline 31st July
ES	Circulate link for National Natural Capital Atlas: Mapping Indicators http://nepubprod.appspot.com/publication/4578000601612288	Complete
ES	Circulate Wessex Water Small Grants Programme information.	Complete
IR	Share details of Defra ELMS test and trial. https://www.dorsetaonb.org.uk/project/defra-tests-and-trials-project/	Complete

ES	Distribute Doodle poll for DONM- w/c 13 th July	Complete
----	--	----------

Updates on actions from the previous meeting

Updates on partners working status:

Partner	Working Status
Dorset Wildlife Trust	Andrew Pollard is working normal hours but little capacity. Amanda Broom and Nicky Hoar (Gillingham Royal Forest Project) and Nicki Brunt still furloughed. Steven Oliver returned in July. Amanda due to return August.
National Trust	Large amount of project work on pause- Gen Crisford furloughed and other staff at Kingston Lacy. Senior management still working and David Brown.
Litter Free Coast and Sea	Working from home- normal hours. Beach cleans now running again.
Wessex Water	Phased/ flexible return to offices- investigations starting again
South West Rivers Trust	50% staff furloughed; some projects ongoing
NFU	Focus around supporting members and supplying information to government around covid-19 and the impact on agriculture. Staff working from home.
BCP Council	Working from home
DC	Natural Environment Team all working at home and carrying out ecological surveys and sites visits for projects including bridge and road schemes, sometimes meeting a small number of colleagues on site.
FWAG-SW	All Dorset team still working, some Somerset team furloughed- could be the case with Dorset later down the line. No on farm visits apart from Higher Tier applications with a deadline end of April.
Environment Agency	Working from home
Natural England	NE offices remain closed (probably for some time yet) and people are continuing to work from home. Importantly we can now do 1:1 only meetings (and only outdoors) and 1:1 outdoor site visits. Both are subject to individual authorisation through a line management approval and reporting procedure.
Game & Wildlife Conservation Trust	Working from home, some night working, e.g. smolt surveys and Parr survey to be undertaken Aug/Sept

2. Norovirus in Poole Harbour- Jez Martin, Caroline Fair and Larry Austin (include update from Jez)

Awareness of the growing political concern within BCP council around the implication of permitted discharge and storm overflows into Poole Harbour and the increase in norovirus cases. A meeting has been organised with the EA and WxW to explore this issue including exploring the Asset Management Plans from WxW. For the first time in Poole Harbour, the Oyster fishery was closed for a lengthy period over last winter due to norovirus. Other fisheries around the UK and France have also had to be closed over the same period. New strains are also being identified around the world.

Discussion

- A information document has been made available from Seafish to explain the Norovirus in Bivalve molluscs- this has already been circulated to the Strategy group.

- Wet weather is linked with increased cases and more storm overflows.
- Shellfisheries were closed after a case of illness was reported to oyster farmer and commercial tests undertaken. The Food Standards Agency's advice was followed. Standard shellfishery monitoring does not include norovirus testing by Cefas.
- No routine monitoring carried out for norovirus, but testing was carried out. PCR test is the only one available, which detects RNA from both the live and dead virus. PCR results are a good correlation of health risk and highlights if we have a problem. Difficult to use a positive result to close a fishery if you don't have the background data- this a higher risk than usual.
- Norovirus can potentially be caught from bathing waters (low risk)- shellfish are bioaccumulators, which increases the risk from eating oysters from contaminated waters, no evidence that this has happened in this case.
- Sources could be from both rivers and wastewater inputs- any sources could potentially add to this.
- Norovirus is prevalent in the winter months- small amounts of norovirus can be found in most waters with wastewater inputs but this can be at varying levels.
- WxW does include disinfection at STWs directly discharging to Poole Harbour (Poole and Wareham & Lytchett Minster)- ultraviolet treatment is used to achieve bathing water quality standard.
- Wild swimming is being promoted by the Rivers Trusts with a new national website on discharges; WxW also have relevant webpage for this <https://www.wessexwater.co.uk/environment/protecting-and-enhancing-the-environment/wild-swimming-what-you-need-to-know>

Action NP: Circulate Seafish information document on Norovirus and Bivalve molluscs

3. PH Nutrient Management Scheme update Paul Cottington

- The scheme has received funding and various communications have gone out including a two-page spread in the Farmers Weekly and various summary documents on the NFU website.
- The next stage is to recruit a dedicated Project Manager- the application has gone live with a closing date 17th July, interviews in August with hope to have someone in post by September.
- In line with the funders' requirements, a 'lessons learnt' document is being created over the next year.
- The Poole Harbour Agriculture Group (PHAG) is now being established as a formal legal entity with pro-bono legal work to support this.
- Now looking at how to work with both DC and BCP to incorporate Community Infrastructure Levy (CIL) money into the scheme- discussions are ongoing especially around the terms of permanence.
- The last partners meeting discussed monitoring for the scheme and how to incorporate farmers into this. This will lead to the establishment of a Technical Group for data and monitoring.
- Definition of agriculture is a tricky task! Particularly around how different definitions work with different lengths and types of tenures and implications for delivery of outcomes.

Discussion

- Are the benefits from the scheme only to be derived from agriculture? what is a landowner's liability in terms of producing benefits, and what is the scheme's requirement? This issue for defining agriculture is that it could mean more stringent regulations. One definition could be those who are in receipt of Basic Payment which might include solar farms, agroforestry and others.

- Could a non-regulatory approach be appropriate- would this help people understand where the problem is coming from. This is a voluntary approach- people will be able to see the evidence and take action.
- DK updated on the PH judicial review consent order (see NE update below). DK/NP to circulate evidence report when available

Action all: Partners who are interested in a farmer-led monitoring project for PHNMS please contact NP, FB or ES

Action ES: Distribute the job advertisement for the NFU post for Poole Harbour Nutrient Management Scheme Project Manager. Note- closing date is Sunday 17th July

Action DK: to circulate evidence report when available

4. Catchment planning

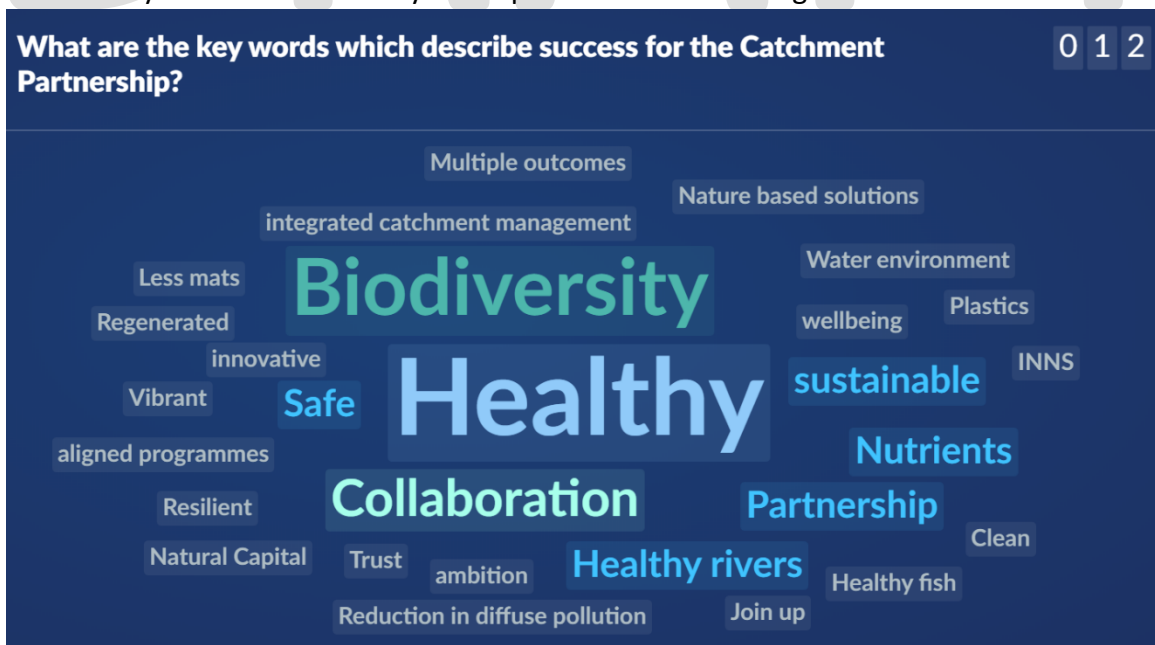
(Interactive slido questions, presentation slides circulated)

NP is currently redeveloping the catchment plans and identifying gaps. This update should provide a clear overview for the catchment and link nicely with other plans such as the local plan, flooding etc. It should identify our current priorities and be useable and easily accessible.

There is a wealth a data already available across the catchment but need to access how to use this and pull it all together- this will also highlight data gaps or weather the data is relevant. Both plans were started separately but there is lots of cross over. The aim is to have a draft action plan by September ready to put projects forward to the MTP in September.

- **Visioning**

We need a vision statement that depicts our overall goal and what we want to achieve. Must be clear and concise and underpin everything that the Catchment Partnership does. Slido word cloud below created with key words submitted by those present in the meeting.



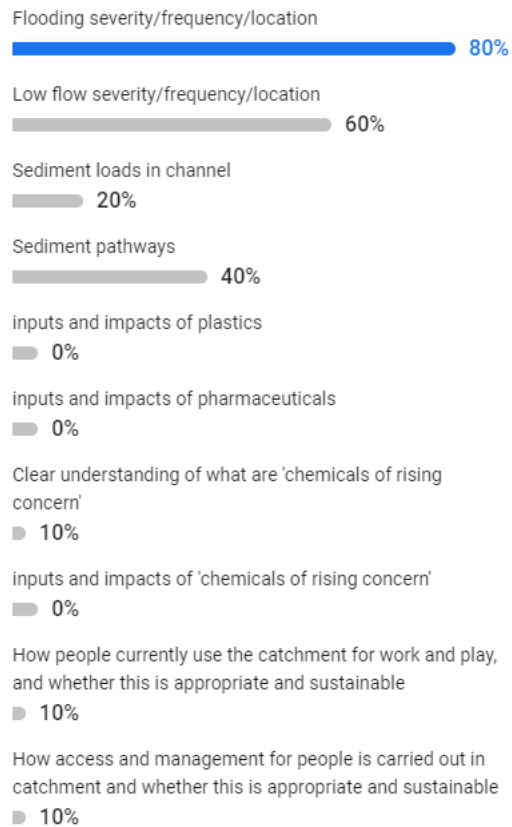
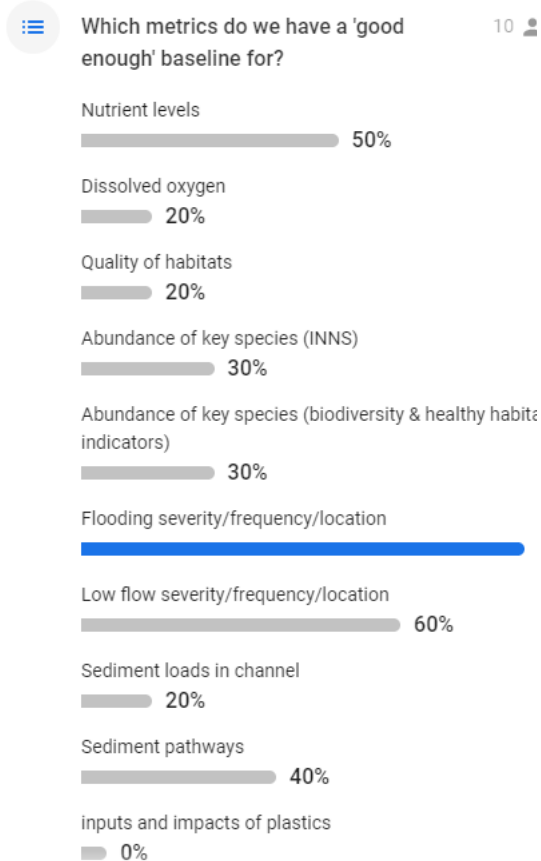
- **Agreeing indicators**

Partners were asked, based on the issues that had been previously identified, to suggest appropriate indicators to measure success on those issues, in terms of achieving the overall vision suggested by the first exercise.

The screenshot shows a collaborative workspace with two main sections:

- Discussion Thread:**
 - Question:** "What are the best indicators for measuring our progress?" (22 people)
 - Answers:**
 - Peoples actions eg recreation swimming fishing walking doing citizen science
 - MST sampling to determine source apportionment
 - Health/rate of decline of habitat, e.g saltmarsh (although decrease in this is more than likely due to variety of factors, not just nutrient run off)
 - Faecal coliforms as a measure of agricultural pollution
 - "reversing species declines"
 - Faecal coliforms as an indicator of sewage contamination
 - Natural Capital
 - Species diversity
 - People engaged in citizen science
 - MORPH?
- Indicator List:**
 - Water outside of channel habitat eg gw levels
 - Ecosystem functionality and connectivity
 - River Habitat Surveys?
 - Engagement leads to actions
 - Flow diversity
 - Health of habitats as well as areas
 - Species monitoring needs to be co-ordinated across catchments and funded.
 - INNS
 - Baselines
 - levels of algae in Poole Harbour
 - Measures of modification
 - Sustained long term in channel river monitoring network - key is long term

in order to be able to measure progress towards a vision, it's important to understand the starting point clearly. Partners were asked if, at a catchment level, they felt there was enough information to help identify 'red flag' priority areas and issues for work. A list of suggested indicators was provided, and partners asked to 'vote' for those metrics they felt there is sufficient data.



Discussion

- Must be as inclusive as possible- any farm clusters are able to provide input and there are two farm clusters in PH that are chaired by FWAG-SW advisors.

Slido Q&A function:

Anonymous
👍 1 🕒 16 Jul, 10:19am
Public health? ...

Ian
👍 0 🕒 16 Jul, 10:20am
You could include 'a disconnect between the water environment and local communities' as an issue? ...

Anonymous
👍 0 🕒 16 Jul, 10:21am
Good and safe access ...

Ian
👍 0 🕒 16 Jul, 10:22am
Re your people point: people who live work and play in the catchment benefit from the services delivered by a high quality water environment ...

A number of other comments were received through the Teams chat function, and also afterwards by email. These have all been noted and will be incorporated in the work going forwards. Our thanks to everyone who participated, and Natalie encourages others to contribute to the planning process as it develops. Please do come and speak to us if there are particular issues you feel should be prioritised.

Action all: Send on further responses to catchment plans to NP to feed into the catchment plan update.

5. Project Proposals for EA's Medium-Term Plan

The deadline for catchment partnership projects to be submitted to the EA's Medium-Term Plan (MTP) is most likely to be September and partners are requested to submit project proposals using the Catchment Partnership's pro-forma form which will be distributed. Project leads will then be given additional support to work up the form to the level required for assessment. This will ensure the correct level of information of is available for the EA to prioritise for funding and to give them a better chance of scoring highly. Both the EA and Catchment Partnership are looking to streamline their current projects list to ensure it's current.

Discussion

- There are several mapping projects on going which could feed into the prioritisation exercise- looking at a more targeted approach for prioritisation and help to fill the gaps.
- Dorset Wild Rivers are keen to apply for the WxW partners programme for the next 5 years of work. Ian Rees has done a lot of work in the West which has been supported by CaBA funding in the past- meeting to discuss this 16th July.
- IR: lots of potential work out there, opportunity map has been pulled together and prioritisation now needs to be strategic with focus and resources.
- Purbeck Farm cluster are looking at how to use the land app and how to incorporate Natural Capital. Have started to look at the Nat. Cap Atlas- there is a lack of water quality data.
- LNP are working with Dorset AONB and looking at opportunity mapping also- could help the partnership direct their approach.
- AONB Test and Trial maps will be available shortly- IR happy to share these when they are ready- need refining with local data. T&T going on until March 2021 but should be able to share the maps in August.
- EA's maps should be available in October- a mapping group/workshop could be beneficial. Bristol Avon are also doing a similar approach- good to link up.

Action all: Feedback to IR/ NH on ideas for Dorset Wild Rivers and how partners can be involved

Action NP & ES: Organise workshop in early August for prioritising and developing projects to be added to the EA's MTP list in their September refresh. (Separate workshops for Stour and Poole Harbour)

Action all: Develop project plans to basic level, and complete proformas 24hr before the workshop date

Action IR: Share opportunity mapping from the Dorset AONB test and trials when made available (possibly in August)

Action AM on sharing Stage zero opportunity maps?

Action DJ, SG, AM, IR & FB: Further discussion around fish data and river health once the data from the two mapping exercises were available in order to help inform the wider mapping exercise

6. Cross- Catchment items that were discussed with the Stour CP on 14/07/20 – see minutes for full details

- **ELMs consultation response**

The ELMs consultation deadline is 31st July with the Catchment Partnership currently drafting a response. There has been a wealth of webinars organised by Defra with a number scheduled for the next couple of weeks. These seem to be more discussion-based sessions and currently no recordings. Partners are encouraged to send in any relevant information to help the partnership form a response. Other partners such as FWAG-SW and Local Nature Partnership are also putting in a response.

Action ES: Share draft ELMS response with partners asap w/c 20th July

Action FB: Share catchment test and trial list

Action all: Send relevant information to be captured in Catchment Partnership response for ELMS consultation by Tuesday 28th July. Send to info@stourcatchment.co.uk

- **Stage Zero**

The EA (led by Aly Maxwell and John Philips) is undertaking a feasibility study on the possible approach of Stage Zero restoration across the Dorset catchments. This item was discussed in full at the Stour Delivery Group meeting, and Poole Harbour DG delegates were invited to join that discussion. Presentations and further details are available from Aly. No physical works are planned as part of this study.

Action AM: Send on webinar links for distribution to wider partners

Action all: For further information and feedback on Stage Zero contact AM

- **CaBA Catchment monitoring co-operative consultation hub**

“A co-operative of organisations to guide gathering, interpreting and sharing of citizen science and community monitoring data to fill knowledge gaps and to engage local communities for a water environment benefiting both people and wildlife.”

CaBA’s aim is to build a more comprehensive data set which can be supplied by a wider number of individuals and organisations but conforms to a set standard to be used at a higher level. CaBA is seeking feedback from Catchment Partnerships and their partners on what a Catchment Monitoring Co-operative might look like and how it can be achieved. CaBA are looking for around £4.9m over 4 years but they currently do not have this funding. For more information visit: <https://monitoring.catchmentbasedapproach.org/>

The deadline for the consultation responses is 31st July. To allow time for Natalie to co-ordinate a partnership response, please provide any details you wish to be included directly to her by Friday 24th July.

Action all: Forward relevant information and input for the Catchment Monitoring Consultation by 24th July to NP

Action NP: Circulate presentation slides for CaBA Catchment monitoring co-operative consultation hub

7. Partners’ and Chair’s updates

A) Partners’ updates

BCP- Jez Martin

- Holes Bay salt marsh recreation project – feasibility work still in progress, discussing with partners options of how this may be delivered

- Central Poole Flood Defence Scheme - geotechnical ground investigation (terrestrial) along route currently in progress. Survey of area for use by foraging by sandwich and common tern will start very soon, to see how used this area is by these birds, to help inform how work would be done to minimise effect on these birds.
- Blandford Road flooding Turlin Moor - Over last winter has been issues with Blandford Road flooding in heavy rain events leading to flooding of businesses. Potentially a few drainage infrastructures issues that may be leading to this, which are under investigation. One potential element is that the channel that Wessex Water's surface drainage system pumping station in area discharges into channel that leads into Lytchett Bay is now heavily vegetated with reeds, causing backing up of drainage system. To address this are looking at dredging this channel this September/October, as this work is within Poole Harbour SSSI/SPA, this is subject to NE assent.

National Trust- David Brown

Beavers: Before going on furlough, Gen Crisford completed the main stakeholder consultation and now confident of the geographical scope of the project that will work and within which we will avoid/ be able to manage land use conflicts. Next step is to develop a more detailed and costed management plan, this will form part of our application to DEFRA for a license- hopefully later this year. This will involve a further phase of stakeholder engagement involving close working with landowners as well as building wider community support. Covid-19 has put a pause on the project and NT has had to stop funding- urgently looking for external funding. A recent application to the Wytch Farm fund was successful will take us to the end of the development phase but does not cover the actual beaver introduction. Looking at Spring 2022 for an introduction if license is successful.

Dorset Council Natural Environment Team – Alice Quinney

- All 5 of DC NET are all working as usual – none of us were furloughed. We are all working from home and carrying out ecological surveys and sites visits for projects including bridge and road schemes, sometimes meeting a small number of colleagues on site when necessary.
- We are writing a response to the ELMS consultation and will send comments for catchment response last week of July.
- **Barn Owl Project.** We have installed 20 boxes over 2 years on 11 DC farms around Twyford and Margaret Marsh area. During our monitoring visits in June - 5 boxes had chicks in with 6 chicks in total. The chicks, 1 parent bird and 3 roosting adults were ringed.
- **Great Crested Newt (GCN)** district licensing – Lyn Cooch has been working with NE to obtain district level license that NET would hold, rather than NE as in other counties.

Natural England-Doug Kite

- Poole Harbour Consent Order: EA are leading on this and are producing a document for how they are dealing with the issue in the harbour. NE are now going through this and now need to respond. Currently EA are not prepared to take all NE advice and require further evidence The Scientific evidence report from NE should be available in 2 weeks . A whole range of measures required to deal with this. Schemes like PHNMS could be possible deliverables.

B) Chair's update

- CaBA National steering groups are continuing

- The water supply issues over the last few months have been seen from a higher demand this spring coupled with water quality issues from a wet winter. The catchment partnership may well be involved in the development of the Water Resources plan over the next AMP.

8. AOB

FLAG is looking for a strategic document for aquaculture in Poole Harbour- the Aquatic Management plan could cover this as well as a Marine Management Organisation (MMO) report on bioremediation.

Date of next meeting: 7th October focus on catchment planning

Action Summary

Who	Action	Progress
NP	Circulate Seafish information document on Norovirus and Bivalve molluscs	
All	Partners who are interesting in a farmer lead monitoring project for PHNMS please contact NP, FB or ES	
DK	to circulate evidence report when available	
ES	Distribute the job advertisement for the NFU post for Poole Harbour Nutrient Management Scheme Project Manager. Note- closing date is Sunday 17 th July. https://nfuonline.livevacancies.co.uk/#/job/details/197	
All	Send on further responses to slido questions/ catchment plans to NP & ES to feed into the catchment plan update	
All	Feedback to IR/ NH on ideas for Dorset Wild Rivers and how partners can be involved	
NP & ES	Organise workshop in early August for prioritising and developing projects to be added to the EA's MTP list in their September refresh. (Separate workshops for Stour and Poole Harbour)	
All	Develop project plans to basic level, and complete proformas 24hr before the workshop date	
IR	Share opportunity mapping from the Dorset AONB test and trials when made available (possibly in August)	
DJ, SG, AM, IR & FB	Further discussion around fish data and river health once the data from the two mapping exercises were available in order to help inform the wider mapping exercise	
ES	Share draft ELMS response with partners asap w/c 20 th July	
All	Send relevant information to be captured in Catchment Partnership response for ELMS consultation by Tuesday 28th July. Send to info@stourcatchment.co.uk	
AM	Send on webinar links for distribution to wider partners	
All	For further information and feedback on Stage Zero contact AM	

All	Forward relevant information and input for the Catchment Monitoring Consultation by 17 th July to NP	
NP	Circulate presentation slides for CaBA Catchment monitoring co-operative consultation hub	

Documents attached

- Seafish summary: Norovirus and Bivalves Molluscs
- Wessex Water info sheet: Overview of Sewer System and Storm Overflows
- Dorset Catchment Partnership Project pro forma
- Catchment Partnership presentation slides

DRAFT