

WESSEX WATER FOUNDATION

Annual Report
2024/25

May 2025

Click to enter →



Wessex Water
YTL GROUP



FOR YOU. FOR LIFE.

Wessex Water Foundation Annual Report 2024/25

Contents

What is the Wessex Water Foundation?	3
Community Fund	4
Community Fund - case study	5
Community Fund - around the region	6
Environment Fund	7
Environment Fund - case study	8
Environment Fund - around the region	9
Avonmouth Area Community Fund	10
Wessex Water Foundation Partner Grants: Environment	11
Wessex Water Foundation Partner Grants: Debt advice	12
Appendices	13

*Cover photo: The Incline Gardens
and Community Orchard funded by
the Environment Fund.*

*Edventure Frome funded
by the Community Fund*

*To navigate through this report, please click
on the page number in the contents and use
the menu bar at the top of each page*



What is the Wessex Water Foundation?

The Wessex Water Foundation provides funding to projects that strengthen communities and benefit the environment.

It has never been more important to both respond to the needs of our communities and make a firm commitment to support them now and in the future, and the Wessex Water Foundation allows us to do just that.

The Foundation was launched in 2020 in partnership with the Somerset, Wiltshire, Dorset and Quartet Community Foundations who help to ensure our funding goes towards the communities that are in most need of support.

In each area, funding for the Environment Fund and Community Fund is awarded at decision making panels made up of

volunteers from Wessex Water and representatives from the local community, who bring a wealth of experience and local knowledge to help us make the best decisions. We are very grateful to community foundation volunteers who give their time to review and support decision making at these panels.

Grants totalling at least £500,000 are distributed through the Foundation every year to support core debt advice services, environment Partner Programmes and through our Community Fund and Environment Fund. In 2024 we also launched a new fund, the Avonmouth Area Community Fund in conjunction with the expansion of the water recycling centre at Avonmouth.



Acknowledgements

We are proud to work with all our partners across the region and especially the local community foundations and their volunteers who enable us to reach and fund such a wide range of community projects across the region.



Funding overview 2024-25

Programme	Number of grants	People directly supported	Amount awarded
Community Fund	80	22,447	£240,420
Environment Fund	49	Not applicable	£66,185
Avonmouth Area Community Fund	7	11,728	£35,000
Partner Grants - Environment	4	Not applicable	£70,000
Partner Grants - Debt Advice	33	2,900	£264,012
		37,075	£675,617

Community Fund

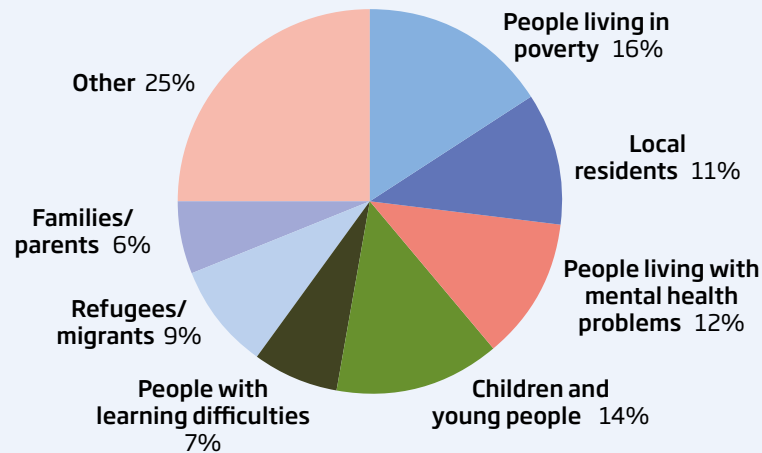
The Community Fund supports charitable activities that aim to build stronger communities and improve the lives of local people. Funding supports community-based activities or projects that meet a local need and improve the lives of local people who are in most need of support.

These activities or projects should be informed by the people or community they seek to serve and have considerable reach.

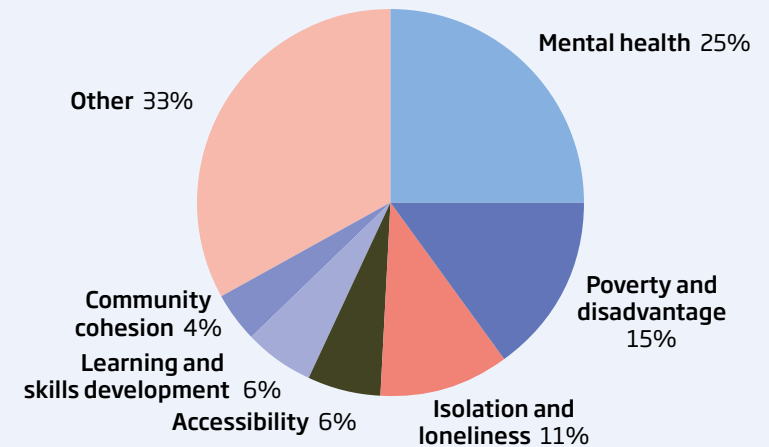
Priority has been given to activities that fulfil one or more of the following criteria:

- take place in areas of multiple deprivation or rural isolation, where people lack access to local services
- help build stronger communities, enabling people to work together and create solutions to local challenges
- help people take steps to manage or avoid debt and build their financial capability. This can include activities that raise awareness and increase the take-up of utility affordability support, such as our help-to-pay schemes.

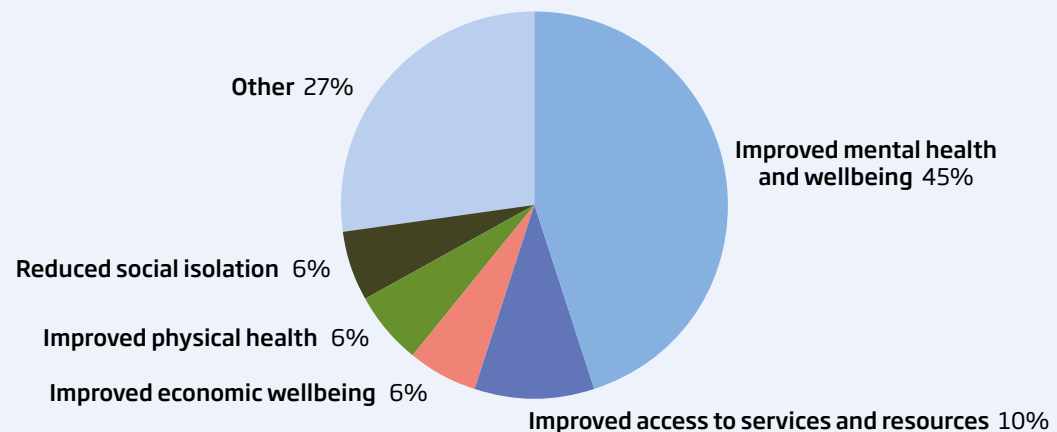
Top beneficiaries of the Community Fund



Top issues addressed by the Community Fund



Top outcomes of the Community Fund



Community Fund – case study

Alzheimer's Support, Devizes, Wiltshire

A grant of £1,000 for the Sidmouth Street Club run by Alzheimer's Support was awarded by the Wessex Water Foundation Community Fund.

This Wiltshire based charity supports people living with all types of dementia and their family carers to reduce loneliness, create connections and enable people to lead active, productive and meaningful lives.

The Sidmouth Street Club is led by manager Becci Field. She explains, "there is no typical day at the club, it depends on what the members want to do but it can include a sing song, group activities, always a tasty lunch and often a speaker, entertainer or the very popular therapy dogs. The main aim is for people to leave the club with a smile. Even if they can't quite remember why they are smiling they know they have had a good time and want to come back!"

Being together not only helps members to combat feelings of isolation and loneliness, it also helps with physical health and offers a chance for members and carers alike to tap into other local support services. Becci shared feedback from a family member who's relative comes to the Club: "She absolutely loves attending the Club, she wakes up on a Wednesday and can't wait to get there and wishes she could attend more than once a week."

"The main aim is for people to leave the club with a smile."



Community Fund – around the region

Working with local community foundations for each area, we track and monitor feedback on funding from previous years. Here are some examples of work funded over 2023/24.

Dorset – Access Dorset

Awarded £3,914 in December 2023 towards their ‘Beat the Budget’ project. This project is designed to equip disabled people with the know-how to cook low-cost meals, improve budgeting skills and the confidence to grow produce at home.

Participants were given the ingredients to cook the meals at home and build a ‘recipe and nutrition folder’ as a resource to keep long-term. In total, 44 disabled people benefitted from the project which also turned into a community lunch, because participants wanted to share and eat their food together and invite carers. Participants also learned budgeting skills, including top tips for shopping on a budget, setting up and using food co-ops, using community fridges and received advice on accessing cheap accessible growing spaces, such as allotments.

90% of the participants said that they felt a significant improvement in their mental wellbeing after attending the sessions.

Wiltshire – Harnham Day Centre

Awarded £3,000 in November 2023 for running costs. Harnham Day Centre is held on Mondays and Thursdays for older people in the Harnham area of Salisbury and those within travelling distance.

The aim of the Centre is to tackle loneliness and isolation. Trustee Peter Dickenson explains: “We have been running for over 25 years. There are a lot of lonely people aged over 65 in Salisbury, and we give a few the opportunity to come out, make new friends, have a chat, be entertained, have a two-course lunch, and then either sit quietly or play games together – it gets people out and they look forward to it. The grant has enabled us to keep on going, and keep our costs to members the same, which has

helped as they struggle with rising costs and pressures on their pensions.”

Somerset – Social Circles

Awarded a £2,000 grant in November 2023 to deliver a community allotment at North Petherton aimed specifically at refugees and asylum seekers.

Within the first few weeks, the group celebrated the end of each session with a communal meal cooked on a firepit, using salads and vegetables grown on the allotment. Other growers at the allotments really welcomed the group, providing some additional help, watering plants between sessions and donating plants, flowers and other items.

Individual families and small groups also began to attend the allotment outside of the sessions to tend the allotment and share a meal. People from the group also then began walking into Bridgwater and joining community events held over the summer. This project really helped hotel residents feel less threatened by some of the articles and comments they were seeing in the media.

Bristol and BaNES – Bath Community Kitchen

Awarded £4,000 from the Community Fund in December 2023 to host cookery workshops and free community meals in disadvantaged areas of Bath.

In total, Bath Community Kitchen delivered six communal meals at the Lighthouse Centre in Twerton. These provided meals for 202 people, as well

as surplus food that was collected by the kitchen and distributed to service users. Food leftovers were also given away each week providing another 57 meals in takeaway boxes.

These meals brought together a diverse range of people, some coming for company and to help feel less isolated, others for food poverty reasons. The kitchen received great feedback: “Thanks for such lovely food and all of your efforts!”

Bath Community Kitchen also ran six cookery workshops which were part of a 12-week programme for young people at Youth Connect South West who are not in full-time education or employment. The “Introduction to Catering” course was designed to give participants improved cookery skills as well as an insight into different areas that could be pursued as a career in food.



Bath Community Kitchen

Environment Fund

The Environment Fund supports charitable and community activities that improve local biodiversity or have a positive impact on the environment for local people.

To receive funding, projects must demonstrate one or more of the following outcomes:

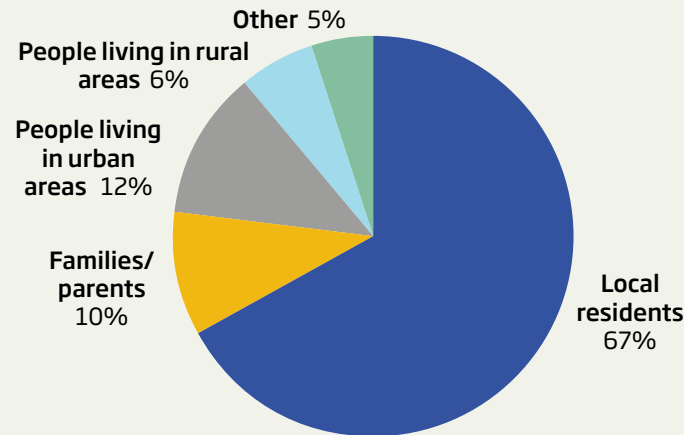
- involve communities in environmental activities that benefit their local area
- restore, maintain or enhance the local natural environment
- engage people in supporting the local natural environment.

Priority will be given to projects that:

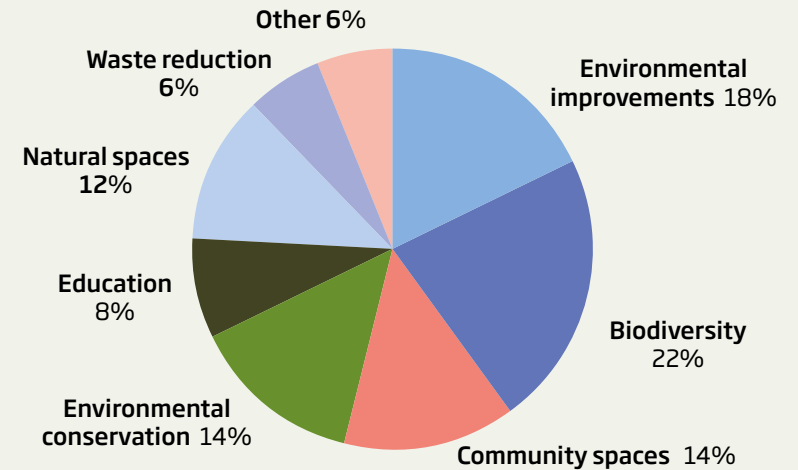
- reduce water usage
- improve environmental sustainability
- improve local biodiversity.

The main focus of this programme is to achieve positive outcomes for the environment through activities that have a direct environmental impact.

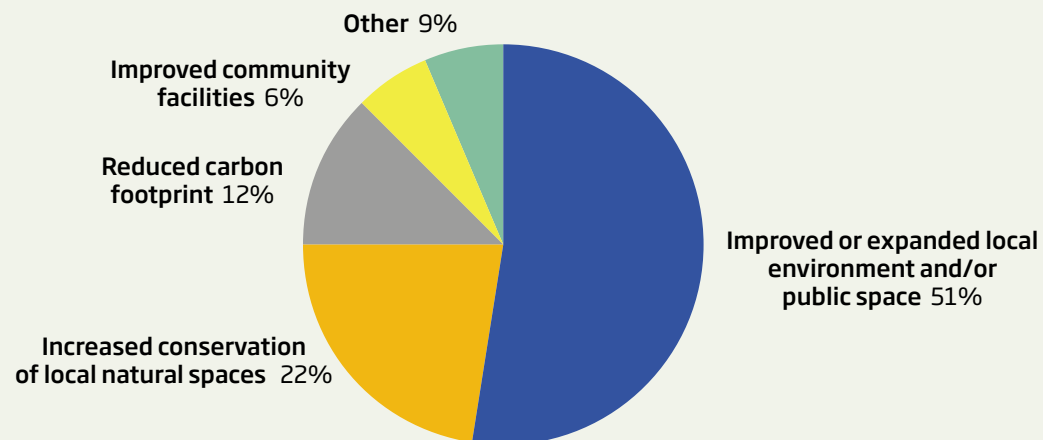
Top beneficiaries of the Environment Fund



Top issues addressed by the Environment Fund



Top outcomes of the Environment Fund



Environment Fund – case study

Mud Pie Explorers

This group received a grant from the Wessex Water Foundation Environment Fund of £1,998.

A Bio Boost project run by Bristol-based group, Mud Pie Explorers, has supported local woodland thanks to an Environment Fund grant. The group, who have specialist experience working with children with additional needs, provide forest school activities, holiday clubs and projects in Lindcombe Woods in Bristol, south Gloucestershire and Newport. The grant covered the cost of staffing, equipment and supplies for the project and allowed the group to offer free spaces for children.

Bekkii Woodward from Mud Pie Explorers explains: “The project involved litter picking to protect wildlife, water quality testing, native wild garlic and bluebell bulb planting for the spring pollinators, leaky dam building after seeing how intense the water flow was during heavy rainfall, and tree planting for carbon capture. All the works were done in consultation with the Friends of Lindcombe Barn Park and Woods.”

The children were hands-on throughout the project, learning new skills while helping their local woodland.



“The project involved litter picking, water quality testing, native wild garlic and bluebell bulb planting, and leaky dam building.”



Environment Fund – around the region

Working with local community foundations for each area, we track and monitor feedback on funding from previous years. Here are some examples of work funded over 2023/24.



Dorset - Development Education in Dorset (DEED)

Awarded a grant of £2,000 in July 2023 to fully fund a Drain Art project in Wimborne, aiming to raise awareness and change behaviours around what we dispose of down our drains.

Four schools took part in this project and bespoke pupil workshops were held, working with 76 pupils and seven staff in total. Workshops focussed on raising awareness about the environmental impact of litter being dropped, and how it can get into street drains, then into our rivers and the sea. Pupils looked at Drain Art as a way of helping people change their behaviour and rethink what they need to do with their waste

Wiltshire - Grovelands Countryside and Wildlife Volunteers

Awarded a £2,500 grant in July 2023 towards maintaining the 18-acre site on the Grovelands Estate in Warminster.

"The main aim of our work is to support wildlife and increase biodiversity on the site which is a public open space. The grant funding has already had an impact on the site. We have been able to employ the expertise of one of the country's leading Water Vole conservation specialists, to guide our work to protect and develop the environment in which our long-established community of water voles can thrive. We have also purchased urgently needed new and replacement equipment, to maintain the area and provide safer access for the local community throughout the year."

Somerset - The Rewild Life Project

Awarded £2,000 in July 2023 for improving biodiversity and sustainability through the reinstallation of a pond, swales, tree planting and community education opportunities.

The project is designed to support the local community and natural ecosystem by creating sustainable food-growing spaces. The land, previously used for conventional farming, had suffered from soil degradation and loss of biodiversity. It sought to address these issues by reintroducing native plant species, improving soil health, and fostering a sense of community involvement in sustainable agriculture.

The project planted 75 metres of hedgerow and 50 native broadleaf trees. This has significantly contributed to the restoration of local biodiversity. Hedgerows provide habitats for various bird species and insects, enhancing the ecological balance of the area.

Bristol and BaNES - Somer Valley Health and Restoration Project

Awarded £2,000 in July 2023 towards adding a pond, land drains and fruit trees to a community garden in Midsomer Norton.

The group explained that draining this plot will make it more productive for organic, natural, homegrown vegetables and fruit. The plot is an open community space available to all local residents. The orchard is full of quality fruit trees of all varieties, meadow flowers including native orchids and the vegetable garden has running water and a composting toilet. The group have extended the orchard area and also intend to increase the vegetable area to meet the needs of new members.

The group is made up of nearly all non-gardeners, some with no space to garden and others with no experience. Coming together, this project has given people a greater appreciation of food production and natural resources, it has made friendships, and the project will help extend the gardening diary into the wettest of winters and the pond is slowly filling with life.



Avonmouth Area Community Fund

Alongside the expansion of our Avonmouth water recycling centre, the Wessex Water Foundation is supporting projects that aim to improve the lives of people in the local area from 2024 onwards.

The fund is designed to support activities that benefit communities in the Avonmouth and Lawrence Weston Ward, including Shirehampton.

Priority will be given to projects that fulfil one or more of the following criteria:

- improve the availability of activities and support for young people aged 11+
- increase opportunities for improving health and wellbeing, including access to the natural environment
- improve access to job-related skills and training.



Organisation	Project Description - Summary	Amount awarded
Lawrence Weston Community Farm	Toward the Young Volunteers project that provides 6-month weekend placements for local 12-18 year olds from disadvantaged areas of north-west Bristol.	£5,000
Bristol North West Foodbank	Toward the Homebank service in the Avonmouth and Lawrence Weston area that provides emergency household goods to families and individuals facing hardship.	£3,400
Home-Start Bristol and South Gloucestershire	For the Mums in Mind group at Long Cross Children's Centre, to improve mental health and wellbeing for women with children under two years.	£9,722
Avonmouth Community Centre Association	Toward extra resources and the annual running costs of an After School Youth Play Club.	£3,500
ActiveBeing Limited	To provide women in the Avonmouth and Lawrence Weston area with therapeutic and creative opportunities to improve health and wellbeing.	£4,920
Community Church @ Lawrence Weston	Toward the staffing costs for 'Boing! Lawrence Weston', a brand-new soft play family support centre.	£3,458
Shirehampton Methodist Church	Toward the core running costs of the Shirehampton Wellbeing and Job, Training and Employment Hub.	£5,000
		£35,000

Water Force volunteer team at Bristol North West Foodbank who received a grant.

Wessex Water Foundation Partner Grants: Environment

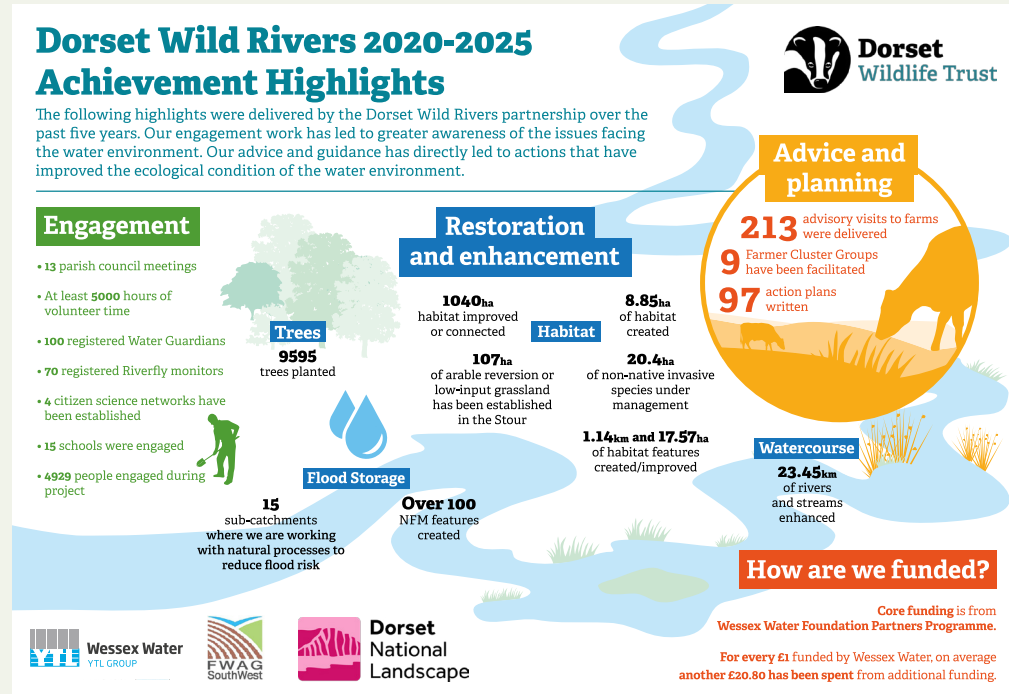
Partners Programme

The Partners Programme provides five-year funding to projects carried out by environmental organisations which conserve and enhance biodiversity and the aquatic environment across our region. New partners were announced in Spring 2025, but as we conclude the latest phase we can look back on the highlights from the Partners work between 2020 and 2025:

- A Better Biss Approach (Wiltshire Wildlife Trust) has delivered a range of interventions across the Biss catchment, including 920 metres of river restoration, 10 new Great Crested Newt ponds and 4.6 kilometres of invasive species clearance.
- Dorset Wild Rivers (Dorset Wildlife Trust) has improved or reconnected 1,040 hectares (ha) of habitat, created a further 8.85ha and enhanced 23.45 kilometres of rivers and stream across key catchments in Dorset.

- The Wider Wylle Strategy (Wessex Rivers Trust) has used our funding to drive forward a new landscape scale river restoration project looking to restore 20 kilometres of river, whilst directly enhancing 2 kilometres of river habitats and engaging with 950 local school children and adults to explain the importance of the River Wylle in Wiltshire.
- The Wilder Waterways project (Avon Wildlife Trust) has supported 13.5 kilometres of ditch restoration work on the North Somerset Levels, engaged more than 500 people through citizen science/volunteering work while working with 13 land managers to link land and riparian management and create four whole farm management plans with opportunities for improvements.

The projects were able to deliver such great outcomes for nature recovery by matching funding from Wessex Water with additional funding from other sources – for example, the Dorset Wild Rivers project was able to spend on average another £20.80 for every £1 of Wessex Water funding, whilst the Wider Wylle Strategy has leveraged an additional £785,000 of match funding. This reflects the feedback from our Partners of the importance of the longer-term secure seed capital provided by the Partners Programme allowing them to create and seek funding for the most suitable delivery projects or pathways.



Organisation	Project	Amount awarded
Wessex Rivers Trust	The Wider Wylle Strategy	£15,000
Avon Wildlife Trust	The Wilder Waterways project	£15,000
Dorset Wildlife Trust	Dorset Wild Rivers	£20,000
Wiltshire Wildlife Trust	A Better Biss Approach	£20,000
		£70,000

Wessex Water Foundation Partner Grants: Debt advice

Wessex Water funds organisations working in the community who provide debt advice or budgeting and apply for our main affordability schemes on behalf of their clients.

Funding grants are determined by the volume of applications to our schemes in each year. In 2024/25 we provided core funding to 33 organisations in our region and expect a rise in applications from our partners for debt advice that reflects the continuing difficult financial position many customers are experiencing.

Organisation	Area	Amount
1625 Independent People	Bristol, City of	£975
Bath & District Citizens Advice	Bath and North East Somerset	£44,931
Brigstowe Project	Bristol, City of	£550
Bristol Citizens Advice Bureau	Bristol, City of	£8,700
Bristol North West Foodbank	Bristol, City of	£3,300
Bristol Somali Resource Centre	Bristol, City of	£2,700
Centre For Sustainable Energy	Bristol, City of	£9,300
Christians Against Poverty	Bristol, City of	£2,625
Citizens Advice Bournemouth Christchurch and Poole	Bournemouth, Christchurch and Poole	£38,350
Citizens Advice Bridport and District	Dorset	£1,000
Citizens Advice Central Dorset	Dorset	£11,050
Citizens Advice in East Dorset and Purbeck	Dorset	£18,650
Citizens Advice Somerset	South Somerset	£33,556
Citizens Advice West Somerset	Somerset West and Taunton	£3,000
Citizens Advice Wiltshire	Wiltshire	£17,550
Faithworks Wessex	Bournemouth, Christchurch and Poole	£1,000

Organisation	Area	Amount
Filwood Hope	Bristol, City of	£500
Grace Advocacy	Sedgemoor	£1,000
Hope Debt Advice Service	Wiltshire	£900
Ignite Food Bank	South Gloucestershire	£500
Melksham CMA	Wiltshire	£1,000
Money Advice Trust	Croydon	£3,000
Navigate CIO	Bristol, City of	£975
North Bristol Advice Centre	Bristol, City of	£500
North Somerset Citizens Advice	North Somerset	£13,325
Scope	Wiltshire	£2,625
South and East Bristol Foodbank	Bristol, City of	£2,700
South Bristol Advice Services	Bristol, City of	£6,825
South Gloucestershire Citizens Advice	South Gloucestershire	£5,100
St Pauls Advice Centre Association	Bristol, City of	£3,025
StepChange	Leeds	£19,425
Talking Money	Bristol, City of	£3,575
Trowbridge Debt Advice Service	Wiltshire	£1,800
		£264,012

Appendices

Community Fund

Wiltshire - Community Fund awardees			
Organisation	Project Description - Summary	Location	Amount awarded
Wiltshire Scrapstore	Funding towards the Volunteer Co-ordinators salary.	Chippenham, Corsham, Melksham	£1,000
Westbury and Warminster Youth Club	Funding towards core running costs for the club sessions.	Westbury and Warminster	£1,000
West Lavington Youth Club	Funding towards general running costs of the organisation.	West Lavington, Market Lavington, Easterton and Devizes	£4,000
Families Out Loud	Funding towards the cost of a part-time Finance & Administration Assistant.	Chippenham, Trowbridge, Melksham, Westbury & Salisbury	£4,000
Read Easy South and East Wiltshire	Funding will help meet the ongoing costs of running the group.	South and East Wiltshire	£1,000
Alzheimer's Support	Funding towards running costs for their Devizes day club.	Devizes	£1,000
Trowbridge Service Users Group	Funding towards general running costs of providing peer support and activities for people with mental health issues.	Trowbridge	£2,361
Wiltshire Money (Citizens Advice Wiltshire)	Funding towards core running costs of the network, enabling them to continue their programme of events, training and support.	Wiltshire	£4,000
Seeds4Success	Funding towards the running costs of a weekly health and wellbeing session for young people aged 12 - 19 years old.	South West Wiltshire	£3,000
Crosspoint (Westbury)	Funding towards the cost of providing 360 counselling sessions.	Westbury	£4,000
CineClub Mere	Funding to provide paper tickets and publicity material for people who do not have access to the internet.	South Wiltshire	£160
Help Counselling Services	Funding towards the cost of providing in-person counselling sessions from new venues in Chippenham and Melksham.	Melksham and Chippenham	£3,500
St Peters Church FoodBox	Funding towards the purchase of additional food to ensure food parcels can provide nutritious meals.	Chippenham	£1,000
Trowbridge Future	Funding towards the cost of running their town centre-based Community Hub.	Trowbridge	£3,979
The RISE Trust	Funding towards the costs of providing their youthwork services in Calne.	North Wiltshire	£1,000
West Wilts Child Contact Centre	Funding for core costs of providing a safe child-centred environment for children of a split relationship to meet their non-resident parent.	Trowbridge	£1,000
Community Money Advice South Wiltshire	Funding towards running costs of Community Money Advice South Wiltshire.	South Wiltshire	£4,000
			£40,000

Somerset - Community Fund awardees

Organisation	Project Description - Summary	Location	Amount awarded
In the Mix Youth Project	To provide regular outdoor learning sessions for young people who may be struggling with their mental health or economically or educational disadvantaged.	Somerset West and Taunton	£3,000
Children's World	Core costs needed to deliver creative and educational activities for children and young people in Glastonbury and surrounding area.	Mendip	£3,900
2BU Somerset	Supporting LGBTQ+ young people in Somerset, expand their outreach, increase availability of 1:1 support, and enhance community activities.	South Somerset	£4,000
The Open Door TAUNTON	Supporting the homeless community in Taunton; providing access to healthy food, fresh clothing and shower facilities, helping them access medical services and accommodation.	Somerset West and Taunton	£1,750
St George's Church, Wilton	Funding to create a dedicated space for our men's shed group.	Somerset West and Taunton	£1,000
Wivey Cares	Funding for core costs of the group that aim to improve the physical, financial and emotional wellbeing of adults living in Wiveliscombe and the 10 Parishes.	Somerset West and Taunton	£4,000
MHA Communities South Somerset	To provide social groups for older people living in the community in deprived areas of Yeovil and Chard.	South Somerset	£2,000
Taunton Area Debt Advice	Core funding for their services.	Somerset West and Taunton	£2,500
Escapeline	Helping to prevent child exploitation by county lines criminal gangs in Somerset.	Mendip	£1,000
SENshine Support	To provide weekly support to SEN families in the Yeovil area.	South Somerset	£1,000
Yeovil Rivers Community Trust	Funding to deliver surveys and workdays for adults with learning difficulties and deliver wildlife walks for people suffering with social isolation at Sutton Bingham Reservoir.	South Somerset	£2,000
Wellington Community Food	Funding for core costs for volunteers to increase access to the farm from a wider range of disadvantaged groups.	Somerset West and Taunton	£1,850
Taunton Opportunity Group	To increase the opening times outside of term-time and the weekdays; allowing for the creation of weekend and school holiday stay and play groups for local SEND children and their families.	Somerset West and Taunton	£4,000
CHARIS	To improve the mental health of traumatised Unaccompanied Asylum Seeking Children (UASCs) in Taunton and surrounding area.	Somerset West and Taunton	£1,000
Glastonbury Mental Health Network	Core costs for securing the Snug in Glastonbury.	Mendip	£2,000
Cultivating Community	To expand our work skills training programme at Victoria Park Community Cafe, supporting young people with learning difficulties through hands-on cafe experience and collaboration with local schools.	Mendip	£1,000
Edventure Frome	Operational salary support to develop three core programmes: Enterprising Women Course, development of a new Community Fridge site and the MAKE Shed.	Mendip	£4,000
			£40,000

Dorset - Community Fund awardees

Organisation	Project Description - Summary	Location	Amount awarded
Age Concern North Dorset	Funding for core costs to support the running of the charity.	Dorset	£4,000
ASCape	To fund ASCape's Family Activity Afternoons - monthly activity sessions aimed at autistic and socially anxious children aged 4-14 and their families in West Dorset.	Dorset	£3,752
Bournemouth Foodbank	To sustain their foodbank through increased demand for winter food and energy poverty.	Bournemouth, Christchurch and Poole	£3,000
Bridport and District Citizens Advice	Funding to offer a part-time paid trainee adviser opportunity to help them meet increased demand on their phone service and support the in-person service.	Dorset	£4,000
Bridport Health and Wellbeing Champions	Funding for indoor gardening and safe gardening. To bring more activities inside and to update safety and comfort features for older people.	Dorset	£987
Creative Kids	Intergenerational Music Workshops that bring the local community together.	Bournemouth, Christchurch and Poole	£3,920
Dorchester Youth and Community Centre	Funding to help with the enrichment and support of young people's mental health and wellbeing through external activities.	Dorset	£4,000
Gillingham Youth Club (The Three Rivers Partnership)	Funding to cover building hire, staffing, activity costs (such as cooking supplies) to ensure the continuation of their weekly youth sessions.	Dorset	£4,000
Harlequin Care	Funding for respite days for unpaid carers.	Dorset	£2,820
HealthBus Trust	Funding for non-clinical interventions by the HealthBus, focusing on educational sessions, housing rights, financial literacy, first aid, and substance misuse.	Bournemouth, Christchurch and Poole	£3,000
Helping Older People New Forest	The Support Service helps older residents living in rural and social isolation in Ringwood and the surrounding areas who need information and advice.	New Forest	£4,000
High Mead Farm	An extension of the Woodbay - a very popular workshop which needs enlarging to enable more co-farmers to engage in woodwork.	Dorset	£3,354
Open House	Funding for advice services from trained advisers, provision of food and non-food emergency aid, operation of a community fridge and an office staffed three days a week.	Dorset	£4,000
People First Dorset	Empowering adults with learning disabilities to safeguard their finances, prevent scams, detect financial abuse, and protect against cybercrime.	Dorset	£3,146
Poole Communities Trust	Free football coaching and street dance for children/young people in two disadvantaged areas of Poole.	Bournemouth, Christchurch and Poole	£4,000
Poole Waste Not Want Not	Funding for online training qualifications, food ingredients, stock for cooking demonstrations, and ensure healthy eating choices and travel cost for volunteers.	Bournemouth, Christchurch and Poole	£3,802
Powerstock Village Hall	The installation of an amplification and induction loop system.	Dorset	£1,200

Continued on next page

Shaftesbury Refugee Group	A summer school for displaced children with partners; intensive English lessons and varied trips and social activities together and with international students.	Dorset	£4,000
Swanage and Purbeck Development Trust (Swanage Action for Refugees)	Funding for social meetings for refugees, activities together with members of the local community, support with relocation to rental accommodation, transport to essential appointments.	Dorset	£4,000
The Burrough Harmony Centre	Improvements to the Harmony allotment to enable expansion of outdoor programmes to reach the wider needs of the community.	Dorset	£2,249
The Bus Shelter Dorset	Funding towards grocery costs.	Dorset	£3,000
			£70,231

Bristol and BaNES - Community Fund awardees

Organisation	Project Description - Summary	Location	Amount awarded
Bath Gateway Out & About	Core salary funding to plan, organise and lead activities to alleviate isolation and loneliness for a marginalised section of the community.	Bath and North East Somerset	£4,000
Oasis Hub Bath	To provide nutritious food for 100+ weekly attendees at two food pantries.	Bath and North East Somerset	£4,000
Mentoring Plus	To support the expenses of volunteers who provide mentoring and support for young people experiencing significant challenges throughout Bath & North East Somerset.	Bath and North East Somerset	£3,630
Nailsea & District Community Transport	To be able to meet existing and new demand for transport services for older/disabled residents.	North Somerset	£2,000
Mind Your Music	Towards a six-month music workshop programme for people struggling with their mental health in Bristol.	Bristol	£2,700
BAND Bristol Association for Neighbourhood Daycare	To support childcare providers in accessing additional staff hours to support disabled children attending their clubs.	Bristol	£4,000
Project Mama	Towards a drop-in group, MAMAHub, which supports displaced mothers facing complex disadvantages to live more connected and empowered lives.	Bristol	£4,000
Swan Advice Network	The continuation and growth of a volunteer community transport scheme for residents in rural areas of BANES.	Bath and North East Somerset	£3,999
Springboard Opportunity Group	Towards the salary of a Specialist Early Years Practitioner at the group's South Weston Centre.	North Somerset	£3,952
Sporting Family Change	To support local individuals struggling with mental and physical health to gain confidence to go outdoors, participating in supported walking activities either 1:1 or in small groups.	Bath and North East Somerset	£4,000

Continued on next page

The Harbour	Grief counselling in Lockleaze for people facing death, those close to them, and people who have been bereaved; alongside community training to strengthen peer-supported delivery.	Bristol	£4,000
Dovetail Orchestra	Towards running Dovetail Orchestra, a music community that improves the lives and prospects of refugees and asylum-seekers.	Bristol	£3,750
Oasis Community Hub South Bristol	Support for the weekly Pantry in Knowle West, serving local families with fresh and store cupboard food at reduced cost.	Bristol	£3,600
Tortworth Forest Centre	Funding towards running the minibus for the Woodland Wellbeing Programme.	South Gloucestershire	£2,000
Time Bank Plus	For the Community Sharing Space, a hub and resource centre based in Twerton, for local people to use.	Bath and North East Somerset	£4,000
Aid Box Community	To contribute to the costs of running ABC's Welcome Hub and Free Shop for refugees and people seeking asylum.	Bristol	£2,000
Vision North Somerset	Towards the recruitment, training and support of volunteers to work with visually impaired people attending social support groups.	North Somerset	£3,850
Bath Community Kitchen	For the provision of community meals at the Lighthouse Centre in Twerton, using surplus food to make healthy food for local people.	Bath and North East Somerset	£3,900
St Werburghs Community Association	To provide a weekly Warm Welcome drop-in supporting people with managing money, getting online, accessing free Wi-Fi, advice on employment, benefits, immigration, debt and energy.	Bristol	£4,000
Bridges for Communities	Towards core costs for their work with refugees, asylum seekers and building stronger communities across Bristol.	Bristol	£4,000
Coexist Community Kitchen CIC	For the Speak and Eat programme, an ESOL and cookery class for refugee communities.	Bristol	£4,000
Baby Bank Network	To support families experiencing poverty or other crises across Bristol by providing preloved baby clothes and equipment.	Bristol	£4,000
Lux Youth Project (Bath Youth For Christ)	For core costs to continue to deliver and develop community youth work and 1:1 mentoring for young people across BANES.	Bath and North East Somerset	£3,808
Southside Family Project	For the Writhlington Community Hub Group for families after school with food, play, peer support and advice and Family Support Workers.	Bath and North East Somerset	£3,000
Bath Share & Repair	To deliver more training and upskilling of the volunteers.	Bath and North East Somerset	£4,000
			£90,189
Total Community Funding			£240,420

Environment Fund

Wiltshire - Environment Fund awardees			
Organisation	Project Description - Summary	Location	Awarded Amount
Bemerton Heath Inter Agency Group	Funding is for Friends of the Folly Group towards hand tools for planting, coppicing and pruning and fittings for a donated storage unit.	Salisbury	£1,500
Calne Pocket Park & Community Garden	Funding towards replacing planters for several trees with more durable and water efficient alternatives; replacing an existing water butt and installing a second one.	North Wiltshire	£2,000
Tisbury Parish Council	Funding towards improved stormwater management measures in an area of the town centre, to include a smart water butt, permeable manhole cover, and rain garden planter.	South Wiltshire	£2,000
Oare Primary School PTA	Funding towards plants, soil and materials to complete a rain garden which is being developed in the school grounds.	East Wiltshire	£1,000
Market Lavington Parish Council	Funding towards the cost of repairing the footpath through Canada Woods and implement measures to prevent slippage into the river and improve biodiversity.	Central Wiltshire	£2,000
Quakers Walk Community Biodiversity Group	Funding towards scarifiers, yellow rattle seeds and wildflower seed mix to increase the wildflower diversity of the area.	Devizes	£1,180
St Mary's Chippenham PTA	Funding towards the development of a wildlife area and pond to improve environmental learning opportunities and connections with nature.	Chippenham	£1,120
Steeple Ashton Recreation Community and Development Group	Funding towards the building of a wildlife pond in the corner of the local recreation field.	West Wiltshire	£2,000
Devenish Bradshaw Charitable Trust	Funding towards rainwater harvesting measures (wooden recycled water butts), Austrian Scythe kits to reduce the need for machinery for mowing, branded clothing for volunteers, wildflower seed, information board and leaflet dispensers.	Salisbury	£1,500
Orcheston Parish Council	Funding towards installing two information boards to raise awareness of the Site of Special Scientific Interest (SSSI) and Special Area of Conservation (SAC) status of the area (the Winterbourne and River Till)	Central Wiltshire	£1,950
			£16,250

Somerset - Environment Fund awardees

Organisation	Project Description - Summary	Location	Amount awarded
The Old Gore Lane Residents' Group	To maintain and make accessible the recreated woodland at the ancient Old Gore Wood site.	Mendip	£1,815
Carymoor Environmental Trust	Funding for a weekly nature conservation group to help manage and enhance the Carymoor nature reserve.	South Somerset	£2,000
Crewkerne In Bloom	Funding to install a rainwater harvesting system collecting rainwater from the roof of a toilet block in Falkland Square, Crewkerne to use for watering hanging baskets and planters around the town.	South Somerset	£2,000
Brendon Orchards Cooperative	Funding to plant up a greenspace in the heart of the town to encourage wildlife with an orchard, trees and wildflowers.	Somerset West and Taunton	£975
Westbury-sub-Mendip Tree Group	Funding for an increased supply of on- site tools.	Mendip	£833
Growing Space	To maintain the wildlife gardens at The Balsam Centre and make our own peat-free multi-purpose compost for the community.	South Somerset	£2,000
Frome College	Restoration of the college pond and development of rainwater collecting infrastructure.	Mendip	£500
Transition Town Wellington	To engage young people and all other residents of Wellington to appreciate and look after the wildlife.	Somerset West and Taunton	£2,000
			£12,123

Dorset - Environment Fund awardees

Organisation	Project Description - Summary	Location	Amount awarded
Bridport Food Matters	Funding to create four new beds around town and have secured the support of the town council to do so.	Dorset	£1,414
Bridport Millennium Green Trust	Clearing of vegetation and planting to allow the trees and shrubs better growth and survival.	Dorset	£975
Buckland Newton Youth Club	Funding for an allotment for young people to learn how to grow vegetables, prepare, cook and eat.	Dorset	£1,693
Corfe Mullen Allotment Association	Improve an existing balancing pond into a self-sustaining wildlife pond.	Dorset	£1,980
Dorset Men of the Trees (Trees for Dorset)	To locate veteran black poplars in Dorset, 2,000 cuttings from clones to supply diverse young plants to repopulate Dorset wetlands.	Dorset	£2,000
Grounded Community	Funding to create a closed loop system of micro-green production at the local shopping centre.	Bournemouth, Christchurch and Poole	£1,950

Continued on next page

Portesham Primary School	The completion and handover of a school and community wildlife meadow/orchard.	Dorset	£2,000
Pymore Village Management Company	Funding for removing reeds with brush cutters, skips and youngman boards.	Dorset	£635
The Incline Gardens and Community Orchard	Enhancing rainwater-harvesting facilities and pond habitats at the Incline Gardens and Community Orchard.	Dorset	£1,000
Thriving Wild CIC	Enhancing the environmental management of an unimproved meadow in the Asker Valley, by reducing surface water run-off and soil erosion, and creating a better wetland habitat area.	Dorset	£850
Townsend Community Association	To continue to provide a well-maintained community garden to promote local food growing, to preserve and support local biodiversity and to enhance local green space.	Bournemouth, Christchurch and Poole	£854
Weymouth Skatepark Association	Promoting more recycling, including by installing indoor recycling bins, and reusable cups, plates and cutlery in their snack bar/water fountain area.	Dorset	£899
			£16,250

Bristol and BaNES - Environment Fund awardees

Organisation	Project Description - Summary	Location	Amount awarded
Hazelnut Community Farm	To increase the use of rainwater through water butts and create a hot composting area.	Bristol	£500
Mendip Access Adventure Foundation	To install rainwater harvesting tanks with the Access Ecology teen volunteer group.	North Somerset	£2,000
Tickenham Field Committee	Provision of six wooden slotted compost bins to compost leaves and grass cuttings at Tickenham Field.	North Somerset	£417
More Trees for Bath and North East Somerset	Creating a sustainable rainwater harvesting system for a tree nursery hub using rainwater collected from a building and polytunnel.	Bath and North East Somerset	£1,500
Friends of Whitehall Primary School	To install rainwater harvesting equipment in the outdoor learning space enabling the school to grow food while conserving water.	Bristol	£800
Land Yeo Friends	Funding towards equipment and one year of insurance to enable the group to remove litter and bankside vegetation.	North Somerset	£199
Hartcliffe City Farm CIC	To implement a rainwater harvesting system at Hartcliffe City Farm to capture water for the community gardens, reducing water usage.	Bristol	£1,000
Save Water to Save the Trym!	To offer practical help to homeowners across the Trym catchment who want a water butt installed to help 'slow the flow' and aid water conservation.	Bristol	£1,000

Continued on next page

Long Ashton Nature, Community & Environment Trust (LANCET)	Equipment to help maintain newly established wildflower meadows and native hedgerows.	North Somerset	£1,000
Mud Pie Explorers CIC	To enhance biodiversity and improve the environmental sustainability of an ancient woodland.	South Gloucestershire	£1,998
Friends of the Park (Oldbury Court / Vassalls Park)	To create and maintain a 1,500 square metre wildflower meadow in Oldbury Court Park, to improve the biodiversity.	Bristol	£2,000
Moorlands Schools Federation PTA	Renovation of the derelict school pond and surrounding area to enhance local biodiversity and for the children to learn about wildlife ecosystems and habitats.	Bath and North East Somerset	£1,898
Ashton Vale Pre-School	Towards enhancing outdoor spaces and developing a raingarden.	Bristol	£750
Stoke Park Community Group	To protect ground flora in semi-ancient woodland by restoring a 500 metre walking path which has fallen into disrepair.	Bristol	£1,600
Holy Trinity Church, Horfield	For water harvesting equipment and swift and bat boxes.	Bristol	£400
BANES Allotments Association	For prototype community water harvesting installations.	Bath and North East Somerset	£1,000
Glyn Vale Heroes (Northern Slopes Initiative)	To create a wildlife pond on the Northern Slopes in South Bristol.	Bristol	£1,000
Share Bristol CIC	Supporting the launch of the Library of Things in Bedminster and to increase the opening hours.	Bristol	£2,000
Fairlawn Primary School PTA	To increase engagement with the natural environment by improving the usability and sustainability of the outdoor classroom including a sustainable watering system.	Bristol	£500
			£21,562

Total Environment Funding	£66,185
----------------------------------	----------------



Wessex Water
YTL GROUP

FOR YOU. FOR LIFE.